



## Service Information

COPIER
--------

☐ **HARDWARE**☒ **SOFTWARE**

---

**Model :**    **Network Multi PDL Printer Board-D1**  
              **Network Printer Board-E1**  
              **Network Printer Board-F1**  
              **Network Multi PDL Printer Board-H1**  
              **Network Printer Board-K1**

**Number:** FF-T01-V1-000095-UK1  
(00-OIPQD0-B0066)

**Date :** June 9, 2000

---

© Canon (UK) Limited

**Location :**    Printer Driver

**Subject :**    Windows NT4.0 Terminal Server Edition Support

**Reason :**    Since lots of inquiries have been made by the sales companies related to “Windows NT4.0 Terminal Server Edition”, the results of the operation confirmation of Network Printer Board-D1/E1/F1/H1/K1 for each Printer Driver are reported.  
                  Basically, each Printer Driver for Windows NT4.0 can be used on NT4.0 Terminal Server Edition.

**System Requirement :**

To Windows NT4.0 Terminal Server Edition, install Service Pack 6 for Windows NT4.0 Terminal Server Edition.

<http://www.microsoft.com/ntserver/terminalserver/downloads/recommended/tsesp6/>

**NOTE:** Ensure Network Administrator is fully aware of implications of using service pack before they install it on their NT4 Terminal Server.

**Detail :**

- (1) PCL5e Printer Driver v4.20 for Windows NT4.0 or later

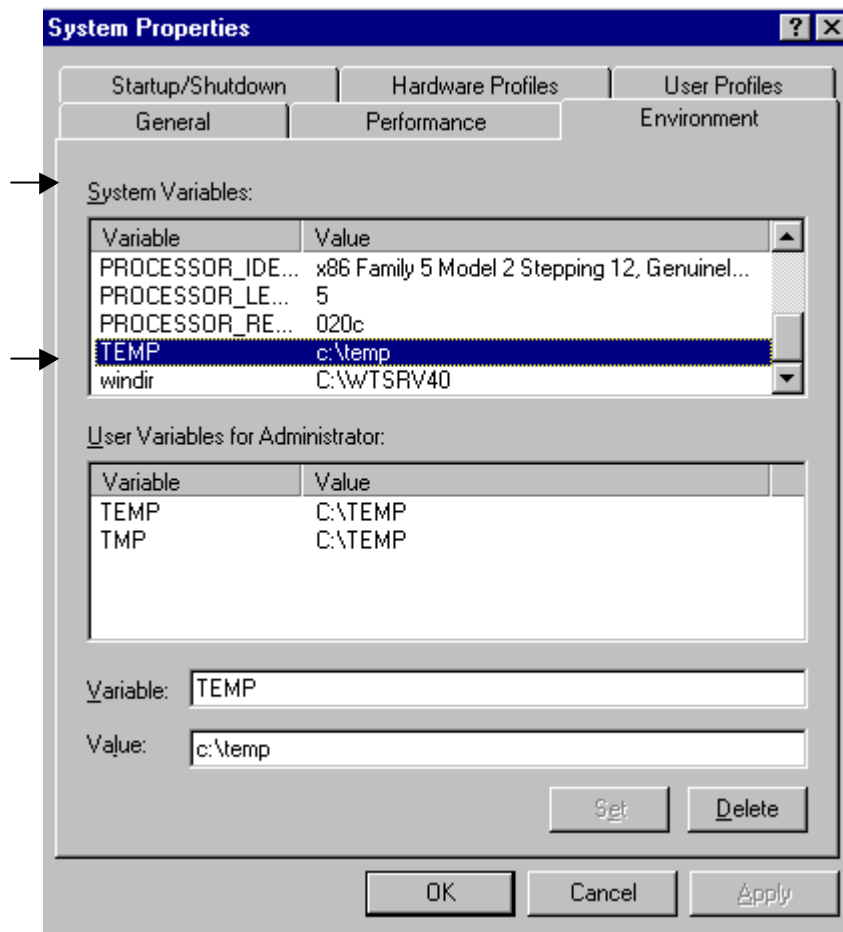
No restrictions.

- (2) Fax Driver v1.20 for Windows NT4.0 or later

When Fax Driver is used with User Authority, the following settings are required.

- (a) With Administrator Authority, define "TEMP" as the environment variable of whole system.

My Computer - (Right Click) -> System Properties -> Environment



- (3) PostScript Printer driver for Windows NT4.0

Especially no problem on the printing functions.

However, when a FAX transmission or a transmission to Mail Box is executed, a Blue Screen occurs in NT, and it shuts down.

At the moment, there is no plan for the correction.